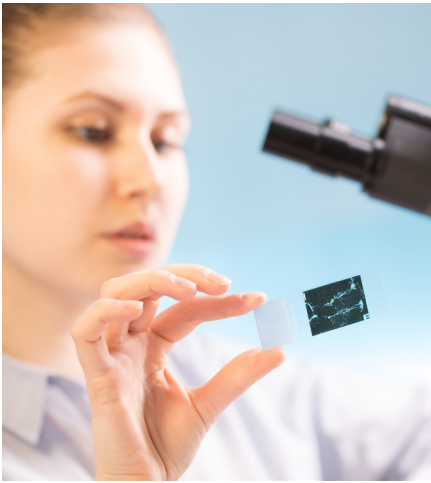


SoftTrack®



SoftTrack—SCC Soft Computer's bar code driven, touchscreen-enabled user interface to SoftPathDx for specimen processing and tracking – provides a continual customized view of order status through completion of specimen processing steps.

SoftTrack provides a workstation-specific, touchscreen user interface to process specimen materials for the pathology laboratory.

With seamless bi-directional integration with SCC's SoftPathDx® module, SoftTrack's easy-to-use interface provides reliable data capture and tracking for specimen grossing, block processing, microtomy, slide processing, reconciliation, and distribution of slides.

Customizable per workstation, the application supports user-defined stations for specific processing activities, label printing, specimen tracking, and storage for anatomic pathology and cytology laboratories.

FEATURES AND BENEFITS

Feature: Workstation-specific customized screens

Benefit: Optimizes user interface experience to streamline the entry screen when performing specific processing tasks

Feature: Detailed specimen tracking, including remaining material information and storage location

Benefit: Reduces risk of misplaced or lost samples and supports reflex and add-on decisions based on remaining material knowledge

Feature: Bar code-driven processing

Benefit: Positive patient identification eliminates manual data entry or material searches; less keyboarding needed

Feature: Touchscreen capable

Benefit: Ergonomic for small workspaces; eliminates the need for a physical computer workstation; readily available as a mobile unit from tablet or laptop computer to allow data capture from any location with a network connection

Feature: User-friendly customization of screen

Benefit: Layouts and details specific to the user (for example, set icon display, font size, backscreen color, audio sounds settings, and other options) to optimize entry per user

Feature: Easy-to-use imaging system that is fully integrated with SoftPathDx

Benefit: Accessible and integrated imaging via SCC's SoftMedia® image management system enables users to scan, attach, and view images used in grossing and seamlessly store and display these images in SoftPathDx.

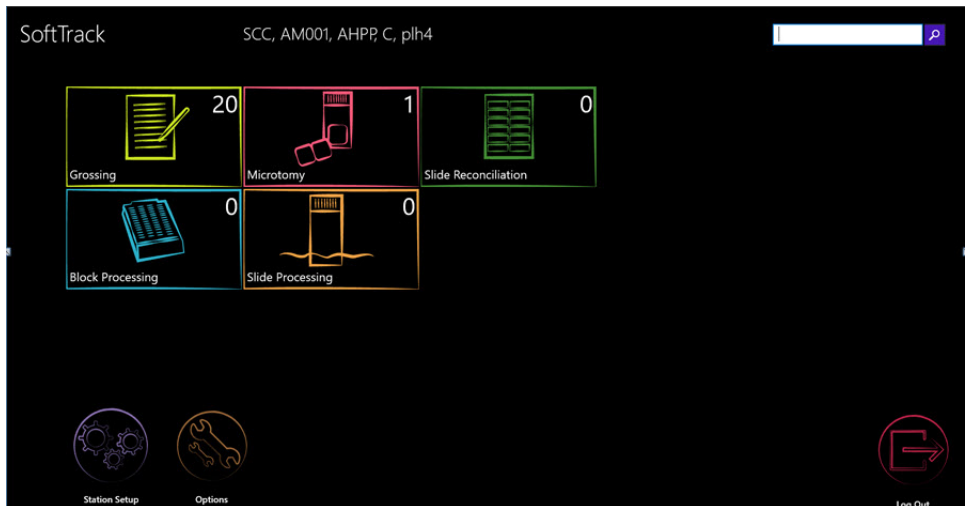
Feature: Direct interfacing to staining instruments

Benefit: Provides users quick access to stainer status viewable in the system as well as documentation of staining runs for quality control trending

SAMPLE SCREENSHOTS

Main Menu Station

The SoftTrack main screen displays pending activities assigned specifically to each workstation. SoftTrack's Search feature enables users to bar-code scan material or manually enter an identifier to qualify materials to the appropriate workstation.



Grossing Station

In the SoftTrack Grossing screen, the scanned specimen displays with pending "Grossing" action. Users can dictate the gross description for the specimen, or use predefined canned messages or free text. Gross images pertaining to the specimen can be added here. When the "Grossing" action is completed and saved in SoftTrack, the case is updated with the gross data and images for the selected specimen and is viewable on the order in SoftPathDx. Additional features in the Grossing window allow for adding additional blocks for the specimen, printing cassettes, and adding Internal notes on the specimen level viewable to the pathologist on the order in SoftPathDx.



Grossing Section

Gross Description text can be added via dictation, free text, or predefined canned message templates. Images can be added to the order in the Gross window using the Media Doc/ Images button. Gross details for the specimen are captured and recorded to store and display in SoftTrack as well as in SoftPathDx.

